

BINTHI

LAND HOLDING GROUP

ABORIGINAL CORPORATION

Capability Statement

Wanggaar Dawaar Waminu – Reaching for the Stars





Binthi Land Holding Group Aboriginal Corporation is the peak organisation of the Binthi Warra land (Bubu) and people (Bama).

Guti: Binthi's most sacred healing site, Binthi Country, Hope Vale, Queensland, Australia

Wanggaar Dawaar Waminu – Reaching for the Stars

About Us

The Binthi Land Holding Group Aboriginal Corporation is a custodian of Traditional Lands, committed to preserving and managing these lands for the Binthi Warra community.

As Binthi Warra Bama (people), we belong to the White Cockatoo (Waandarr) moiety of the patrilineal Guugu Yimithirr Nation.

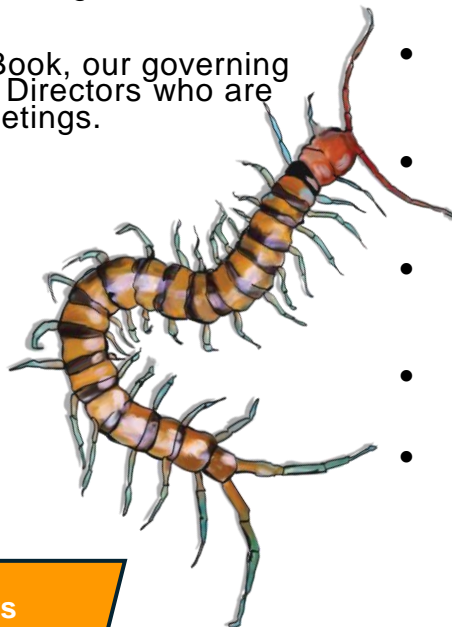
Our totems (Bing a-thawuunh-nga) are Brahminy Kite (wandi), Centipede (galaaya), and Nightjar (wambal).

Our Country consists of a mixture of shires, tenure and Native Title arrangements. It spans from south of Redbank to Cocoa Creek and Bridge Creek, within the Mclvor River and Morgan River catchments on the Cape York Peninsula.

Our tropical Country is characterised by the Wet and Dry Seasons.

Our Binthi Warra people have an unbroken connection to our Country and our organisation has been incorporated since 1999.

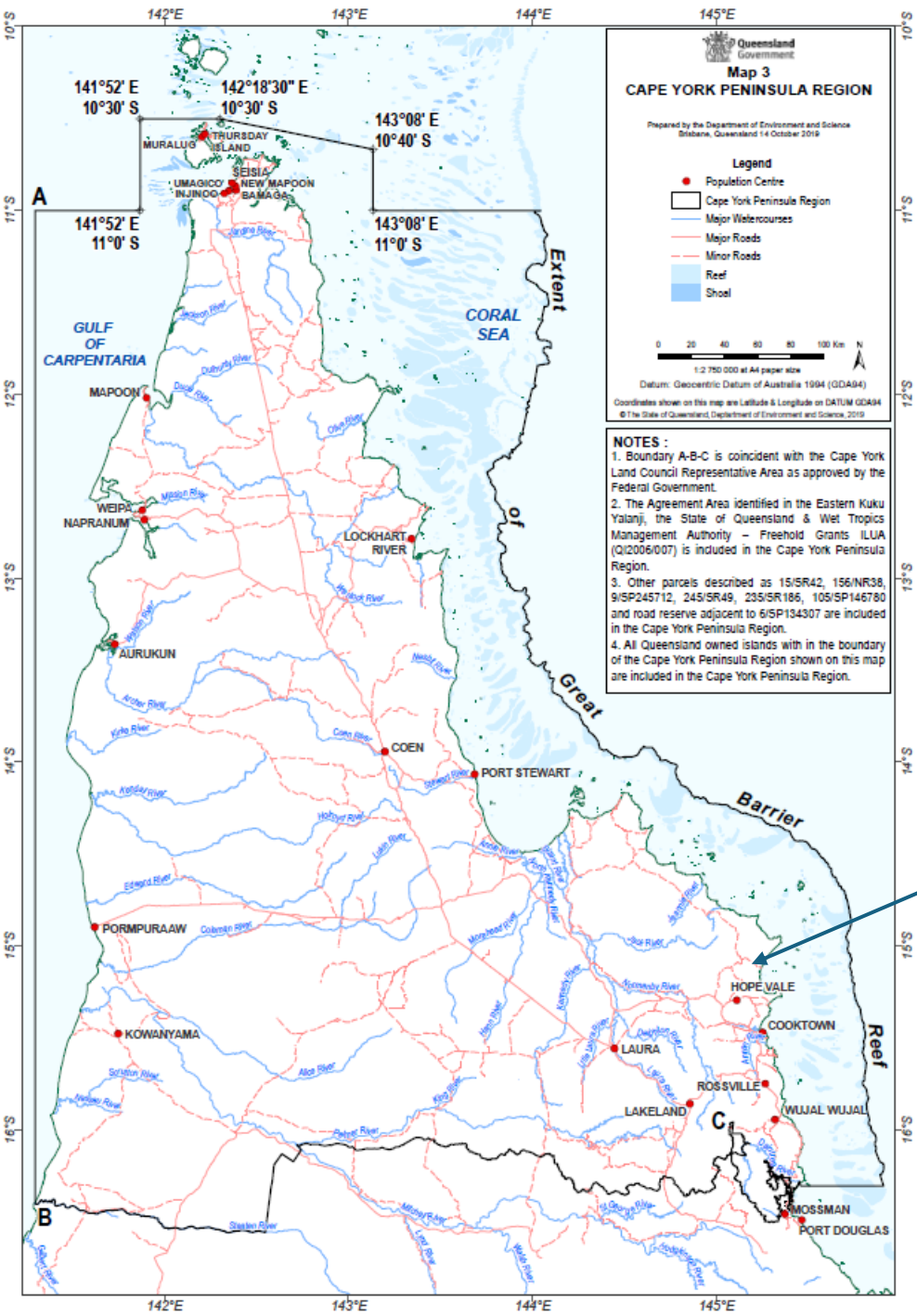
In accordance with our Rule Book, our governing body is a six-person Board of Directors who are elected at Annual General Meetings.



Our Purpose

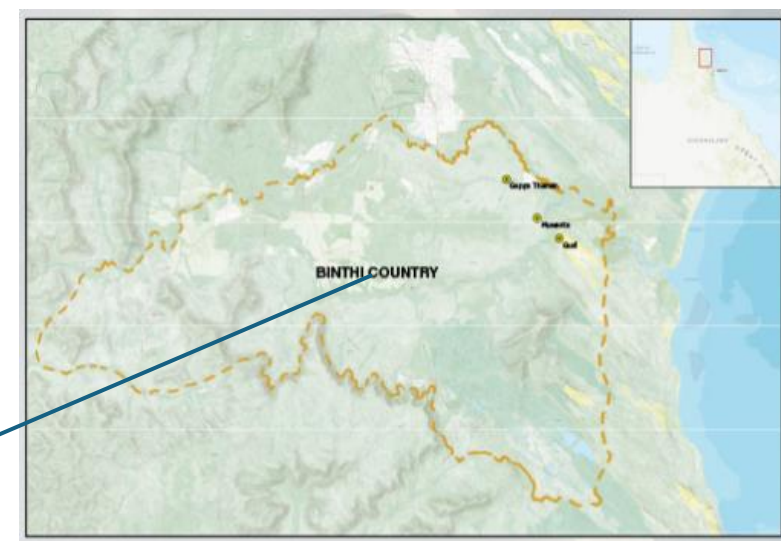
- As a united clan, our mission is to preserve and enhance the cultural, environmental and social values of our Country (Bubu);
- Our motto is 'Binthi Warra Bamaa-ngay, Bubu Thana-ngan-ngu, Dabarrgu Ngarra-thinhu, Magu-badaaygu' - forever Protecting and Respecting the Sacredness of our Land';
- As Traditional Owners, Custodians and Trustees of our culture and country, we will deliver the highest standards of land management to protect the sanctity and uniqueness of our natural landscapes;
- By encouraging people to reconnect with Country, we promote healing and help 'Close the Gap';
- As proud Binthi Warra Bama (people), we champion sustainable land stewardship in accordance with our Lore, stories and customs;
- We will conserve and restore our Aboriginal cultural heritage and environment by promoting ecological sustainability;
- As community leaders and Elders, we will consult with our community to enable participation in decisions affecting their lives;
- We will optimise access to resources and services to continuously improve their quality of life of all generations;
- We will collaborate with strategic partners who respect and value our ways; and
- Together, we will forever protect, respect and celebrate our sacred Country for future generations.





Binhi Country is situated in Eastern Cape York Peninsula, near Hope Vale, and inland from the Great Barrier Reef World Heritage Area, and has:

- mixed native title, shire council, and tenure arrangements, within the McIvor and Morgan Rivers catchment area.



Our Vision

Our vision is Wanggaar Dawaar Waminu: Reaching for the Stars as per image on right. It consists of the following components:

- Role as innovative Indigenous Entrepreneur (IE) and Indigenous Land Manager (ILM);
- Control our own destiny as custodians of our people, country and culture;
- Good governance and an abiding connection with our ancestors;
- Sustainability practices that combine the best of traditional ecological methods and modern technology;
- Mutually respectful collaboration and partnerships with non-Indigenous organisations;
- Programs that deliver benefits to our people - socially, culturally and economically;
- Long-term prosperity and career pathways through education, training and employment;
- Creative business enterprises that connect us to national and international opportunities;
- Cultural pride in clan history and identity; and
- Viable future of self-management and self-reliance for future generations.



Binthi Elder Roy McIvor: In Guugu Yimithirr, the name of the morning star (Venus) is Dawaar. It is seen in the eastern sky as people are starting to move, ready to walk from the camp or go hunting. Just before dawn is the time the thuga, the (scrub hen), sings the last of its night call.

McIvor, R. 2010, p. 144, Cockatoo: My Life in Cape York, Magabala Books Aboriginal Corporation, Broome, Western Australia.



Legal Functions

- To fulfil the role and functions of a land-holding entity in accordance with the *Aboriginal Land Act 1991* (QLD) and the *Aboriginal Land Regulation 1991* (QLD);
- To be the grantee, including sole grantee, of land grants made under the *Aboriginal Land Act 1991* (QLD);
- To receive royalty payments from the State under the *Aboriginal Land Act 1991* (QLD);
- To act as trustee of any community purpose reserves and land granted pursuant to the *Land Act 1994* (QLD), including ordinary freehold land;
- To own land, including legal and equitable interests in land;
- To act as trustee of any other trust, whether charitable or otherwise, established for the benefit of any of its members either alone or with others;
- To hold title to Binthi lands, including legal and equitable interests in land;
- To enter into compensation or other agreements for mining and other activities pursuant to the *Mineral Resources Act 1989* (QLD), the *Native Title Act 1993* and any other legislation;
- To act as an Aboriginal cultural heritage body under the *Aboriginal Cultural Heritage Act 2003* (QLD);
- To exercise all powers necessary or convenient to perform its functions for the benefit of the Statutory Title Holders in all matters relevant to these objects; and
- To operate and maintain a gift fund to be known as 'The Binthi Land Holding Group Aboriginal Corporation Gift Fund' in accordance with the requirements of the *Income Tax Assessment Act 1997*.



Corporate Objectives

- Lawfully distribute any of the Corporation's property, in-kind or otherwise, among any of its members;
- Assist in the relief of poverty, sickness, destitution and disadvantage among Binthi Warra through social and economic development;
- Promote community development and a robust infrastructure to deliver resources and services in education, health, housing, employment and welfare;
- Act as a clearing house on information, skills, participation and community services;
- Create diverse opportunities in agribusiness, conservation, niche Indigenous products and tourism;
- Develop an Indigenous Protected Area (IPA) Management Plan, Fire Management Plan, Visitor Management Plan, Pest and Weed Management Strategy and Binthi Warra Healthy Country Plan;
- Implement Healing Country initiatives to sustain land management, preserve threatened species, safeguard sacred sites, and rehabilitate native species;
- Implement Healthy Country Plan to address threats to Binthi Country through community engagement, cultural knowledge and working on-country;
- Implement biodiversity management by leveraging knowledge of eco-systems and weather patterns;
- Educating community members and the broader public about sustainable ecological practices.



Our Values and Principles

- We are the oldest living and continuous culture in the world. We carry cultural, environmental and spiritual wisdom that is transferred through generations from ancient millennia.
- We respect our Ancestors, Elders, each other, land, and sacred places.
- As an inclusive and supportive culture, we treat all people with dignity and value their contributions.
- As part of our commitment to honesty and integrity, we promote accountability and transparency.
- We represent the aspirations of our people, respect our diversity, and the rights of Binthi Warra people to speak for Binthi Country.
- Our sustainable land management will balance economic development with environmental protection.
- The connection to Country is healing for the health and well-being of the Binthi Warra people and community.
- Our core values are relationships, ethics, sustainability, people, empowerment and trust.



Our Resources

- Management of 25,000 hectares of land.
- Human Resources (all First Nations people)
 - Ramona Mclvor – Volunteer Program Manager, Bachelor of Arts – Extended Major in Anthropology
 - Selwyn Mclvor – Chairperson, Master Electrician
 - Clifton Pearson – Deputy Chairperson, Heavy Machinery Operator
 - Vanessa Rosendale – Treasurer
 - Ian Woibo – Director, Binthi Elder, Security Guard
 - Stephan Wallace – Director, Binthi Elder, Heavy Machinery Operator
 - Betty Woibo – Director, Social Worker
 - Rynerta Richards – Reserve Director, Binthi Elder
 - Paula Fullagar – Reserve Director
 - Malcolm Mclvor – Reserve Director, Binthi Elder.
- Physical Resources
 - Mount Baird Station Homestead.
- Technological Resources
 - Environmental Systems Solutions – Binthi Warra Information Management System, Our Cat Herder, Xero and Microsoft.
- Cultural Resources
 - Binthi Elders and Clan leaders are proficient in Guugu Yimithirr language and knowledgeable in traditional customs.



Our Partners



Great Barrier
Reef Foundation



Australian Government

Indigenous Land and Sea Corporation



The **ILSC GROUP**



Queensland
Government

PEOPLE. COUNTRY. OPPORTUNITY.



FRRR

Foundation for Rural
Regional Renewal



Australian Tropical Herbarium



Cape York
Natural Resource Management



ENVIRONMENTAL SYSTEMS SOLUTIONS



**CAPE YORK
LAND COUNCIL**

MANYRIVERS

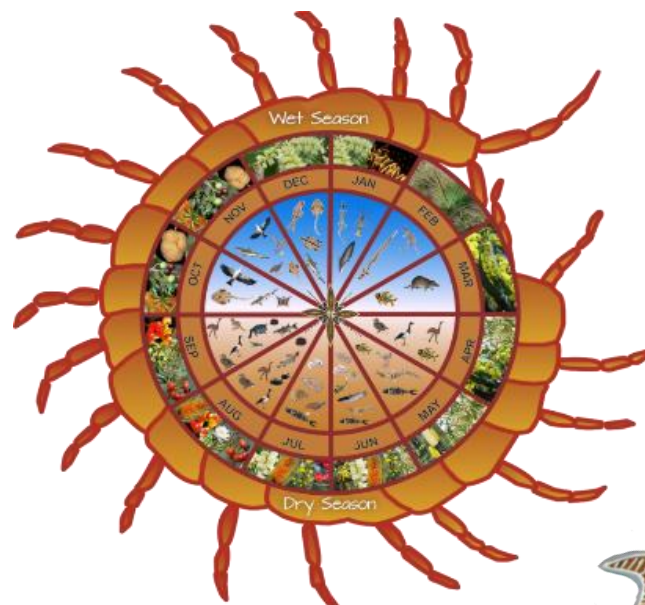
TROPIC
BOOKS & FINANCE

Pew

Why Partner with Us

Our unique strengths set us apart from other land management organisations:

- Attained the 2022/2023 Finalised Priority Assessment List for our National Heritage Listing nomination.
- Pursuing status as an Indigenous Protected Area (IPA).
- Pursuing the protection of wetlands of International importance under the Ramsar Convention.
- Expertise in Binthi Warra's cultural heritage that integrates traditional knowledge with modern land management practices.
- As corporate strategic Indigenous Entrepreneurs (EIs) and Indigenous Land Managers (ILMs), we can design and execute a 'go to market' strategic plan.
- Our Binthi brand name will be trademarked with Intellectual Property (IP) Australia by December 2024.
- Leveraging contemporary scientific evidence, we bring Indigenous Bio-cultural Knowledge (IBK) and Traditional Ecological Knowledge (TEK).
- Leveraging Elder wisdom, we offer bush survival skills, traditional hunting tools, traditional medicines, and Traditional Fire Practitioners (TFP) for controlled burns.
- In-house, trained and certified personnel who specialise in business innovation, cultural heritage, specialist trades and agriculture.
- Quality Control for our products and services via Environmental Systems Solution's Binthi Warra Information Management System, and Our Cat Herder Board Management Software.
- Adherence to Total Quality Management (TQM) practices such as continuous improvement, robust monitoring, and stakeholder engagement.
- Our products and services are measured by Critical Success Factors (CSFs) to attain key performance indicators (KPIs).
- Our strategic location offers access to spectacular natural scenery and 1193 species of animals. It is a place of bounty (Thaman) teeming with birds, reptiles, rainforests, fisheries, woodlands, swamps and mangroves.
- The Mclvor and Morgan Rivers Junction is linked with a series of lagoons and sand dunes.
- Includes 'Muwanta' - the traditional site for 'marriage ceremonies' between the White Cockatoo (Waandarr) and Red-tailed Black Cockatoo (Ngurraarr) clans within the Guugu Yimithirr Nation.
- The Binthi Warra Seasonal Calendar showcases the movements and availability of our native flora and fauna interact with the surrounding landscape and climate.



Our Accreditations and Memberships



Contact Us

For inquiries or collaboration opportunities:

Binthi Land Holding Group Aboriginal Corporation

Email: Contact@binthi.org.au

Phone: 0498 136 778

Website: <https://binthi.org.au/>.



<https://www.facebook.com/blhgac>



<https://www.linkedin.com/in/binthi-land-holding-group-aboriginal-corporation-binthi-warra-13747a219/>



https://www.instagram.com/binthi_warra/



<https://www.youtube.com/channel/UCP4GREsmckKsHvsVv2qXyuA>



<https://www.pinterest.com.au/binthilandholdinggroup/>.

